



**Heavy Duty Wrist Unit**

The Heavy Duty Wrist is an easy to maintain unit which provides quick and easy interchanging of the terminal device. It has 12 lockable positions of rotation giving the user improved control and dexterity to complete functional tasks. Available in 2 sizes. When used with one of a variety of hand/adaptor plates, this wrist allows rotation to be free or controlled.

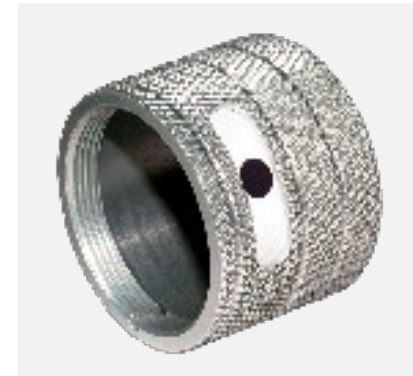
Part Number	Size	Description	Weight	Height
SP249	50mm (2")	Quick release, lock, 12 position rotation	69g (2 1/2 oz)	27mm (1")
B01155	54mm (2 1/8")	Quick release, lock, 12 position rotation	69g (2 1/2 oz)	27mm (1")



**Wrist Housing - Parallel**

The Heavy Duty Wrist Housing is used to secure the Heavy Duty Wrist within the forearm. These housings are available in a range of sizes to suit the desired wrist dimensions and forearm profile.

Part Number	Size	Description	Weight	Height
B00573	50mm (2")	Parallel, bonded into forearm	14g (1/2 oz)	25mm (1")
B00572	54mm (2 1/8")	Parallel, bonded into forearm	20g (3/4oz)	25mm (1")



**Wrist Housing - Tapered**

The Heavy Duty Wrist Housing is used to secure the Heavy Duty Wrist within the forearm. These housings are available in a range of sizes to suit the desired wrist dimensions and forearm profile.

Part Number	Size	Description	Weight	Height
B00825	50mm (2")	3° taper, laminated into forearm	21g (1oz)	38mm (1 1/2")
B00827	54mm (2 1/8")	3° taper, laminated into forearm	28g (1 oz)	38mm (1 1/2")
B00826	54mm (2 1/8")	6° taper, laminated into forearm	28g (1 oz)	38mm (1 1/2")



**Hand Connection Plate**

For Heavy Duty Wrists; a plain base connection plate for cosmetic and mechanical hands.

**Note:** Both B01172 and B01179 are also compatible with the Ottobock fastening arrangement.

Part Number	Size	Description	Weight	Height
B01179	50mm (2" x 3/4" x 1/2")	2" Heavy Duty Wrist	50g (1 3/4 oz)	31mm (1 1/4")
B01172	54mm (2 1/8" x 3/4" x 1/2")	2 1/8" and 2 1/2" Heavy Duty Wrist	56g (2 oz)	31mm (1 1/4")

## Wrist Units - Heavy Duty Wrist

### Adapter Plates - Flat

Flat adapter plate compatible with a variety of Heavy Duty Wrist sizes.



Part Number	Size	Description	Compatible With	Weight	Height	
1	B00967	50mm (2" x 3/4" x 1/2")	3/8" BSW (UK Thread Internal)	50mm (2") Heavy Duty Wrist	42g (1 1/2 oz)	34mm (1 3/8")
	B00900	54mm (2 1/8" x 3/4" x 1/2")	3/8" BSW (UK Thread Internal)	54mm (2 1/8") Heavy Duty Wrist	46g (15/8 oz)	34mm (1 3/8")
2	B06568	50mm (2" x 3/4" x 1/2")	1/2" x 20TPI (US Thread Internal)	50mm (2"), 54mm (2 1/8") Heavy Duty Wrist	52g (13/4 oz)	49mm (2")
3	B22264	54mm (2 1/8" x 3/4" x 1/2")	M12 (European Thread Internal)	54mm (2 1/8") Heavy Duty Wrist	60g (2 oz)	53mm (2")



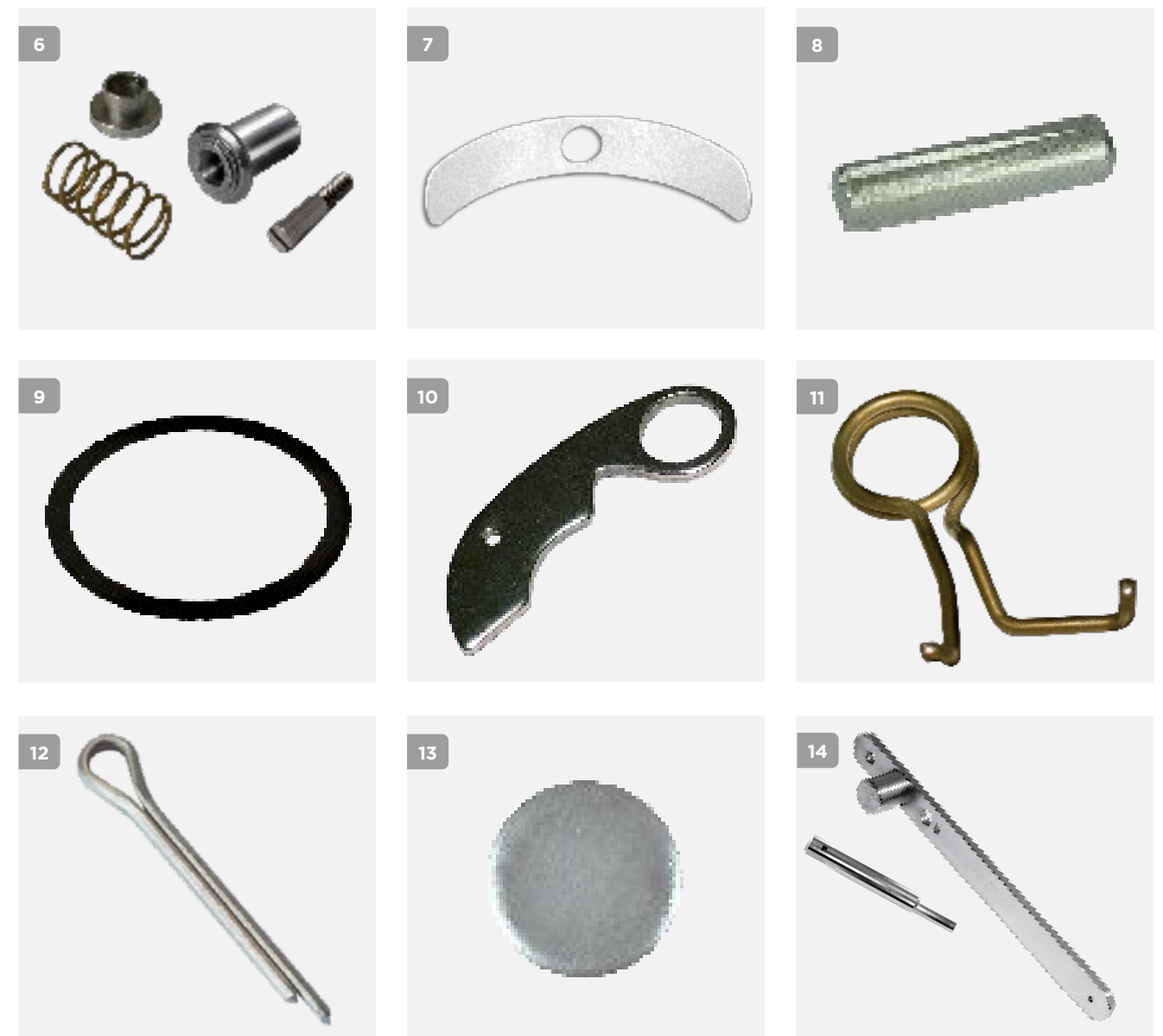
### Adapter Plates - Domed

Domed adapter plate compatible with the 54mm (2 1/8") Heavy Duty Wrist.

Part Number	Size	Description	Compatible With	Weight	Height	
4	B00965	54mm (2 1/8" x 3/4" x 1/2") Allows free rotation <u>with</u> lock feature	3/8" BSW (UK Thread Internal)	54mm (2 1/8") Heavy Duty Wrist	55g (115/16 oz)	29mm (1")
5	B00966	54mm (2 1/8" x 3/4" x 1/2") Allows free rotation <u>without</u> lock feature	3/8" BSW (UK Thread Internal)	54mm (2 1/8") Heavy Duty Wrist	60g (2 oz)	31mm (1")

## Wrist Units - Heavy Duty Wrist Spare Parts

### Heavy Duty Wrist Unit - Spare Parts



Part Number	Description	Compatible With	Supplied	
6	E17985	Operating Knob Kit 2", 2 1/8"	50mm, 54mm (2", 2 1/8") Heavy Duty Wrists	Each
7	B05435	Sliding Cover - Parallel	All Heavy Duty Wrists	Each
	B05368	Sliding Cover - Tapered	All Heavy Duty Wrists	Each
8	NPN0217	Locking Mills Pin	All Heavy Duty Wrists	Each
9	B00748	Rubber Locking Ring	All Heavy Duty Wrists	Each
10	B00744	Snap Catch Blade	All Heavy Duty Wrists	Each
11	B00746	Catch Blade Spring	All Heavy Duty Wrists	Each
12	NPN0007	Split Pin	All Heavy Duty Wrists	Each
13	B00745	Plug	All Heavy Duty Wrists	Each
14	B18631	Assembly Removal Tool	All Heavy Duty Wrists	Each